

Stoneleigh & Ashow Parish Council update June 2023



Construction noise update



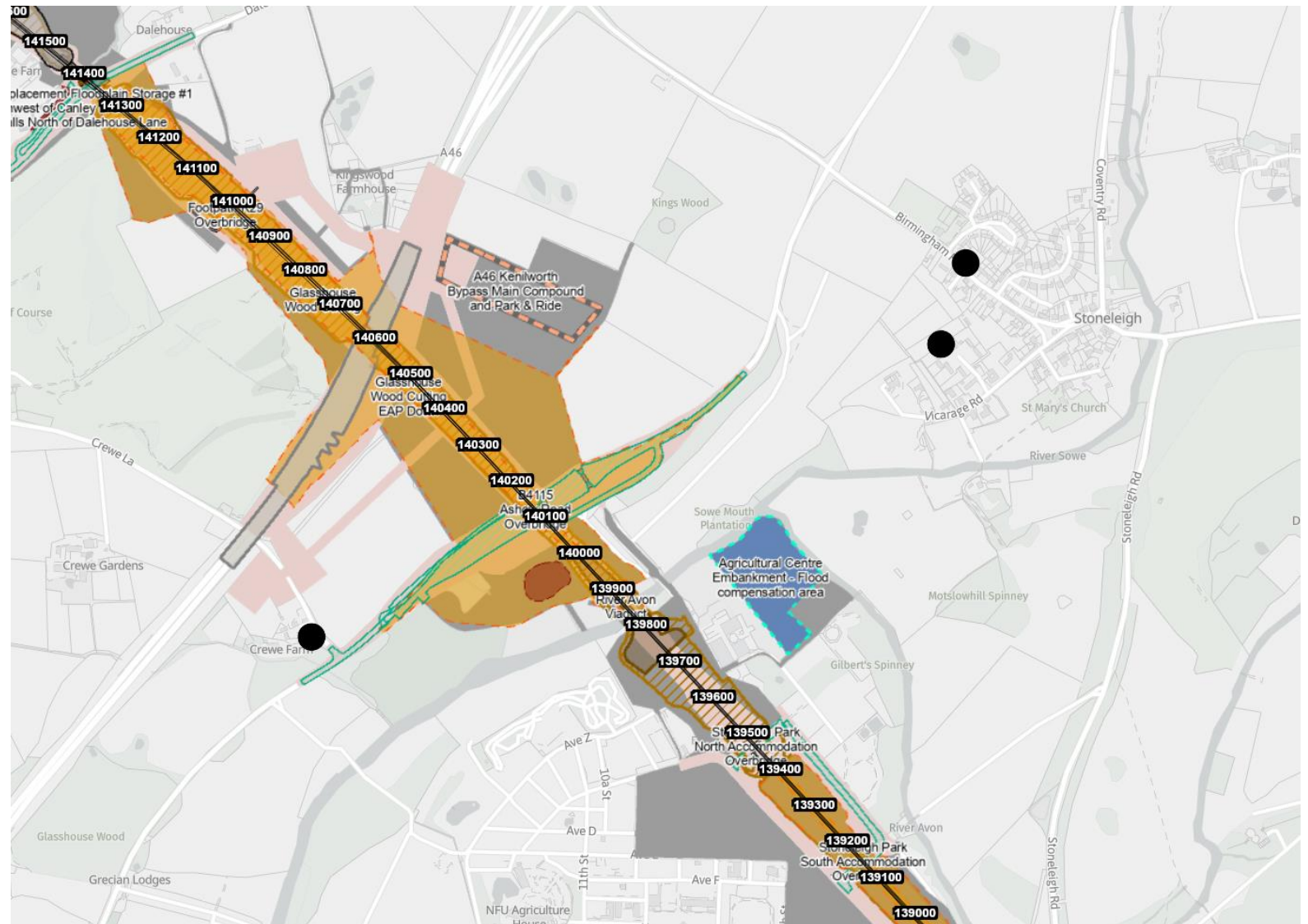
Concerns

Monitoring has been carried out to investigate whether:

- Removal of vegetation along A46 may have increased road traffic noise
- Construction noise from HS2 works



- Crewe Lane
- Birmingham Road
- Walker's Orchard



Method

Baseline noise comparison

Detailed analysis of the measured noise levels during the three-month period from July 2022 to September 2022 has been undertaken:

- For each day in the period, the 10-hour average equivalent A weighted sound pressure level ($L_{pAeq,10hr}$) is compared with the **baseline sound level** from the Environmental Statement.
 - A change in road traffic noise of 1dB is the smallest that is considered perceptible.
 - A 3dB change is the minimum perceptible change in noise level under normal conditions.

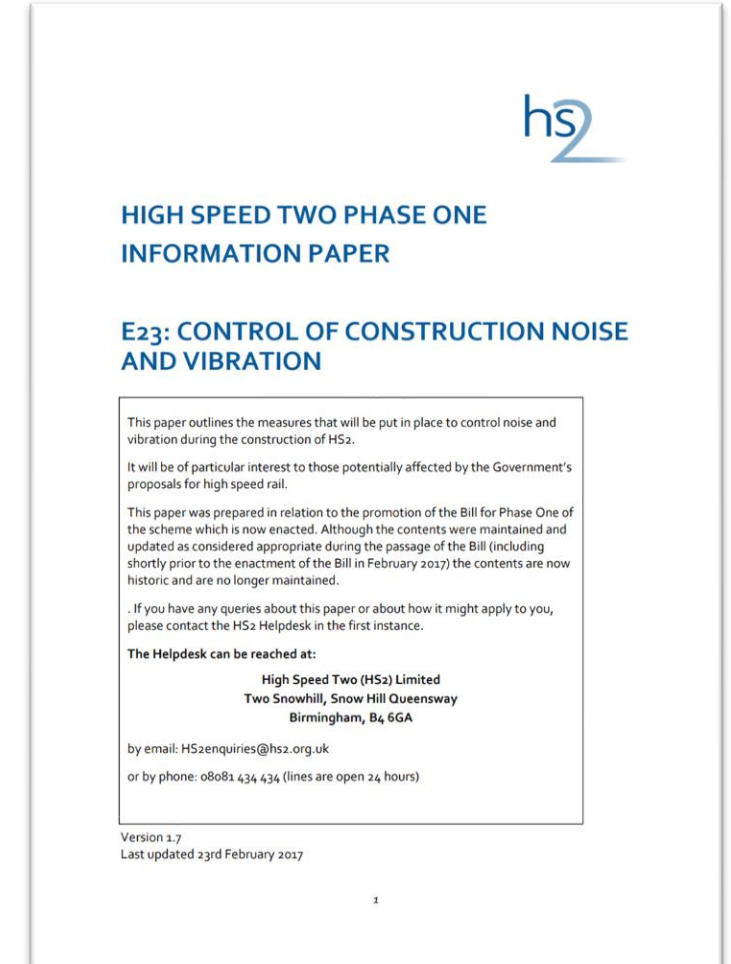


Method

Absolute levels of noise

Absolute levels of construction sound are considered in the context of the following construction noise thresholds set out in HS2 Information Paper E23:

- Lowest Observable Adverse Effect Level (**LOAEL**): this is the threshold at which construction noise is considered to start causing observable adverse effects to people. For the daytime this is 65 dB.
- Significant Observable Adverse Effect Level (**SOAEL**): this is the threshold at which construction noise starts causing significant observable adverse effects to people. For the daytime this is 75 dB



Results

Table 1. Summary of Measured and Baseline Levels

Location	Average Measured $L_{pAeq,10hr}$ (dB)	ES Baseline Daytime L_{Aeq} (dB)
The Barnyard	56.3	60.6
5 Birmingham Road	51.2	55.4
Walker's Orchard	47.8	47.1

Baseline change:

- A change in road traffic noise of 1dB is the smallest that is considered perceptible.
- A 3dB change is the minimum perceptible change in noise level under normal conditions.

Absolute thresholds:

- LOAEL = 65 dB
- SOAEL – 75 dB

Conclusions

Baseline noise comparison:

The average measured levels at two of the three locations (The Barnyard and 5 Birmingham Road) are below the ES baseline, and those at the third location (Walker's Orchard) are less than 1dB above the ES baseline.

The measurement data indicates that there has been no perceptible increase in ambient noise levels at any measurement location due to either increased road traffic noise or HS2 construction activity.

Absolute noise levels:

All the measured levels in Table 1 above are noted to be below LOAEL, and therefore well below the SOAEL.

The measurement data indicates that it is unlikely that the vegetation removal or the HS2 construction activities have led to any adverse noise effects.



Flythrough



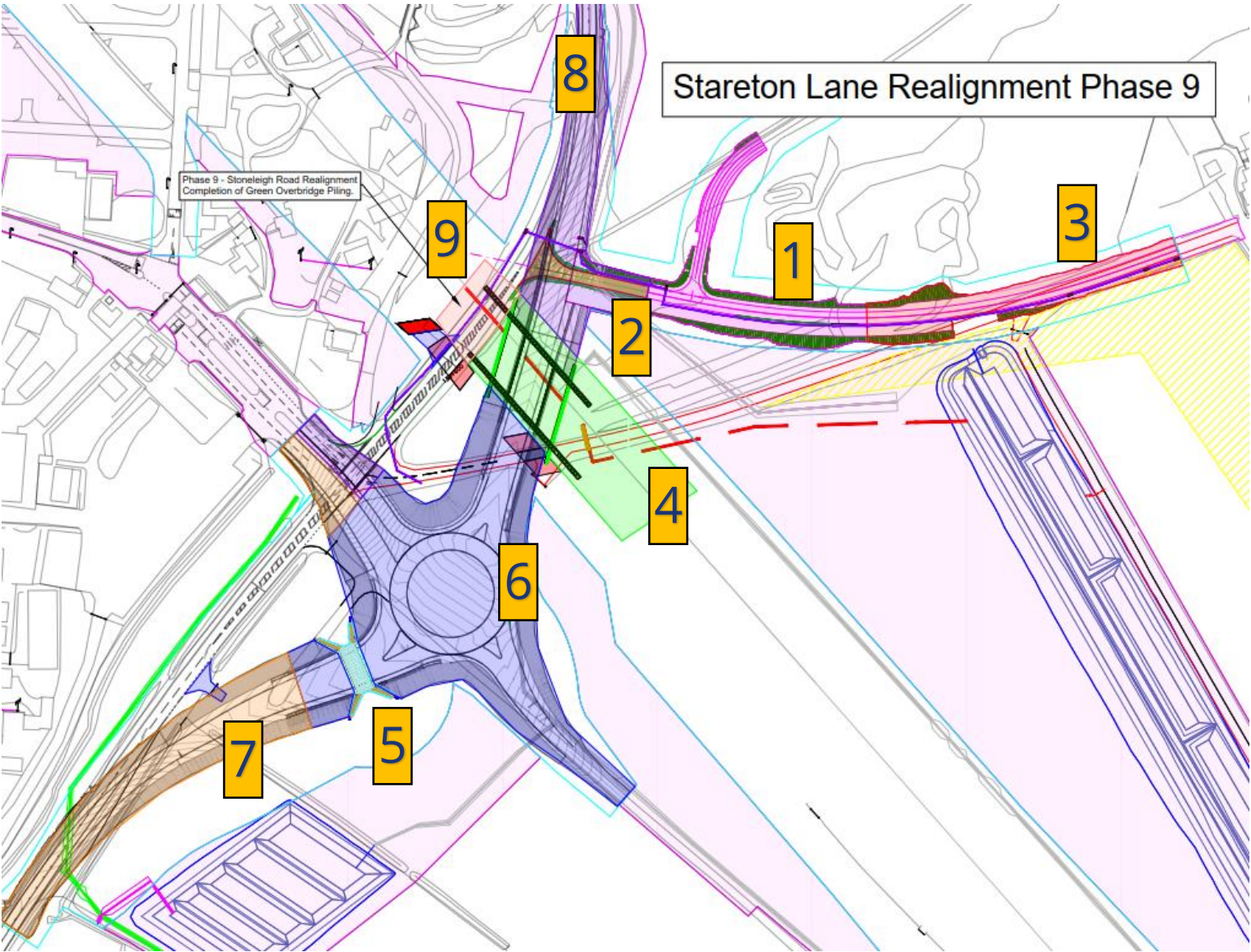


Construction update



Stoneleigh Road Green Overbridge

Task Name	Target start	Target completion
[1] Temp. bellmouth between Stoneleigh road and diverted Stareton lane	Q2 2023	Q2 2023
[2] Stareton Lane diversion	Q2 2023	Q2 2023
[3] Tie-in with existing Stareton lane	Summer 2023	Autumn 2023
[4] Piling Platform, Piles Construction and Bridge Construction	Summer 2023	End of 2023
[5] Stoneleigh underpass construction	End of 2023	end of 2023
[6] Stoneleigh roundabout and Realignment Build up	End of 2023	Summer 2024
[7] SW Tie-in Connection and 1 st half of Stoneleigh Park Entrance	Autumn 2024	Autumn 2024
[8] Stoneleigh Road NE Tie-in and 2 nd half of Stoneleigh Park Entrance	Autumn 2024	Autumn 2024
[9] Construct remaining north side of the bridge	End of 2024	End of 2024



Dust management 2023



Dust management

Monitoring:

Local receptors on site



Prevention:

Damping down and use of additives



Reporting:

Internally for EMR compliance, WDC notification
additional corrective action



Community Engagement lookahead

Date	Proposed activity
4 July 2023	Drop-in session in Stoneleigh Village Hall, 1-4pm HS2 event page: https://www.hs2.org.uk/events/bbv-and-hs2-stoneleigh-ashow-drop-in-session/ Eventbrite: https://www.eventbrite.co.uk/e/bbv-hs2-stoneleigh-ashow-drop-in-session-tickets-651741224547
7 November 2023	Drop-in session in Stoneleigh Village Hall, 1-4pm HS2 event page: https://www.eventbrite.co.uk/e/bbv-hs2-stoneleigh-ashow-drop-in-session-tickets-651741224547 Eventbrite: https://www.eventbrite.co.uk/e/bbv-hs2-stoneleigh-ashow-drop-in-session-tickets-65174147529
	HS2 event page https://www.hs2.org.uk/events/

Warwick District Council contact card

HS2

CONTACTING HS2

Your HS2 point of contact is:

Sara Lee

sara-louise.lee@balfourbeattyvinci.com

Sara is the point of contact for Warwick District Council members and parish council chairs along the Phase One route through Warwickshire. You can contact Sara with any questions about HS2 within your local area, community engagement or legacy opportunities.

For urgent or out of hours enquiries please contact our helpdesk.

We have a complaints process which ensures that we deal with all complaints efficiently and in the most appropriate way. Find out more: hs2.org.uk/how-to-complain

HS2 IN YOUR AREA



The HS2 contractor working in your area is Balfour Beatty Vinci. They will be building the railway in this area and improving the road network.

YOUR LOCAL HS2 WEBSITE

Community website with updates on local construction and engagement activities:

hs2.org.uk/in-your-area/hs2-in-warwickshire/

Residents can sign up to receive news alerts.

The HS2 Helpdesk is available all day, every day for any questions you may have.

Freephone: **08081 434 434**

Minicom: **08081 456 472**

Email: **hs2enquiries@hs2.org.uk**

Online: **hs2.org.uk/contact-form**

The Helpdesk is the best point of contact for any immediate or emergency matters.

USEFUL INFORMATION

HS2 Community & Business Funds

Find out how groups can apply and see projects which have received funding in your area: hs2funds.org.uk

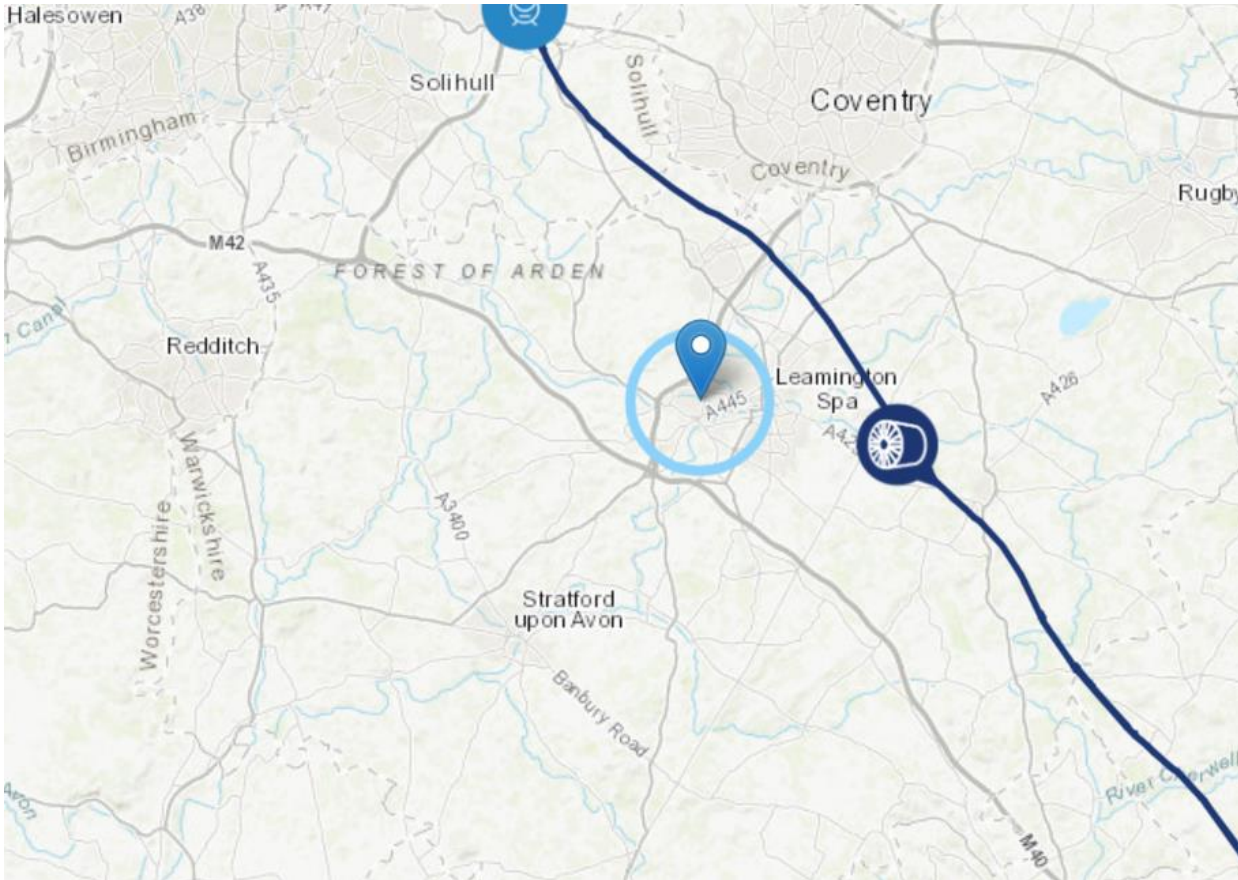
HS2 Jobs Board

Find out about opportunities to work on HS2 and vacancies across the HS2 supply chain:
hs2.org.uk/careers/careers-with-our-supply-chain

Support for local business

How local businesses in your area can get involved in the project:
hs2.org.uk/local-business

See when and where HS2 works are taking place in your area



IN YOUR AREA INTERACTIVE MAP

You can use our interactive map to **view the HS2 route through your area** and find information about current and planned construction works.

Our map brings all of our works notifications together in one place.

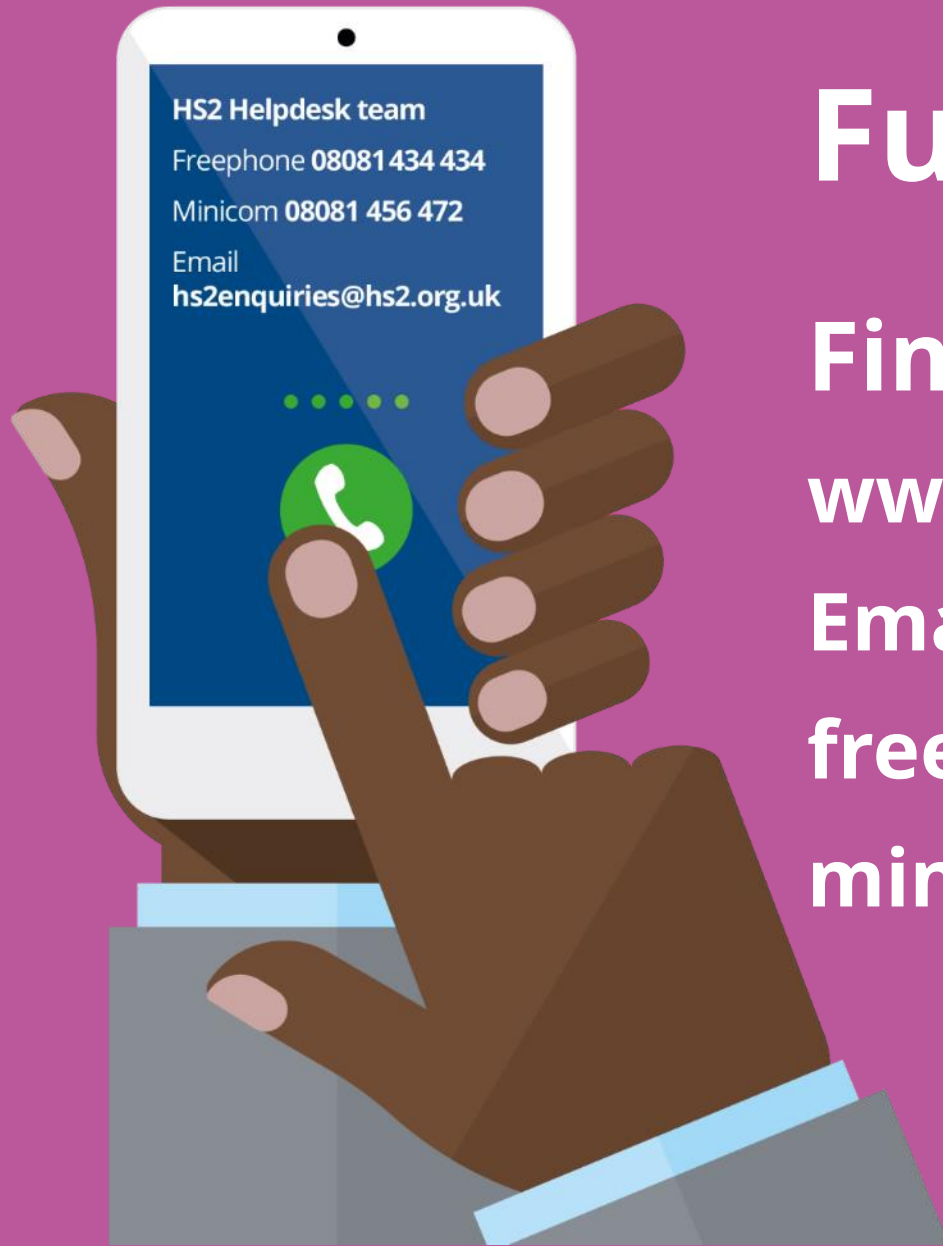
Each work item, highlighted on the map with a 'hard hat' icon, lets you know:

- the location and planned duration of the works
- which contractor is delivering it, and
- what kind of activity they are doing, e.g. setting up a compound or an archaeological dig.

You can easily see any other works we might be doing nearby, also pinpointed with an icon.

You can find the HS2 interactive route map online at hs2.org.uk/in-your-area/map

[CLICK HERE TO GO DIRECTLY TO
YOUR AREA ON THE MAP](https://hs2.org.uk/in-your-area/map)



Further Information

Find out more ...

www.Hs2.org.co.uk

Email hs2enquiries@hs2.org.uk

freephone 08081 434 434

minicom 08081 456 472

Copyright notice

- The copyright for this presentation remains with HS2 Ltd.
- It cannot be reproduced as a whole or in part without written permission from HS2 Ltd.
- If required, please contact our Corporate Communications Team at corporatecomms@hs2.org.uk.

