



# A46 STONELEIGH JUNCTION IMPROVEMENT SCHEME

## EXISTING A46 BRIDGE CLOSURE – STONELEIGH & ASHAW PARISH COUNCIL

10 November 2022



**COLAS**

WE OPEN THE WAY







# INTRODUCTIONS

## A46 STONELEIGH JUNCTION IMPROVEMENT SCHEME

**PAUL BENTLEY**

PROJECT MANAGER – WARWICKSHIRE COUNTY COUNCIL

**ANDY BOND**

SENIOR PROJECT MANAGER - COLAS LIMITED

**ZESHAN HUSSAIN**

HIGHWAYS SUB-AGENT – COLAS LIMITED

**STEVEN BROOKS**

SENIOR QUANTITY SURVEYOR – COLAS LIMITED

# PROJECT OVERVIEW

## A46 STONELEIGH JUNCTION IMPROVEMENT SCHEME



### Construction Overview

- New Gyratory and Junction Upgrade
- New Bridge over A46 Carriageway – 36m
- New Bridge over Finham Brook – 19m
- Improvement works to Existing A46 Bridge



### Stakeholders

- Contract between Colas and Warwickshire County Council
- National Highways take over part of works on completion



# PROJECT ISSUES

## NEW BRIDGE STRUCTURAL STEELWORK



### New A46 Bridge Structural Steelwork

- 2 of the 8 girder had a fabrication error
- Collaborative working to resolve
- Deck was ready for concrete on 15<sup>th</sup> March
- Girders rectified on 18<sup>th</sup> October



### Outcome

- Issue has delayed works by 7 months
- Colas, WCC and NH working to mitigate that delay
- Works to the Existing Bridge is one of those mitigations
- This is why planning approval is being sought





# EXISTING BRIDGE WORKS

## ORIGINALLY ACCEPTED PLANNING PROPOSAL



### Existing Work Activities

- Bridge done in two halves – **North** & **South**
- Running Traffic maintained as it is one way
- New A46 Bridge open
- Works to take **16 weeks**
- Works happen in final phase – Majority of other works completed



### Works Involve

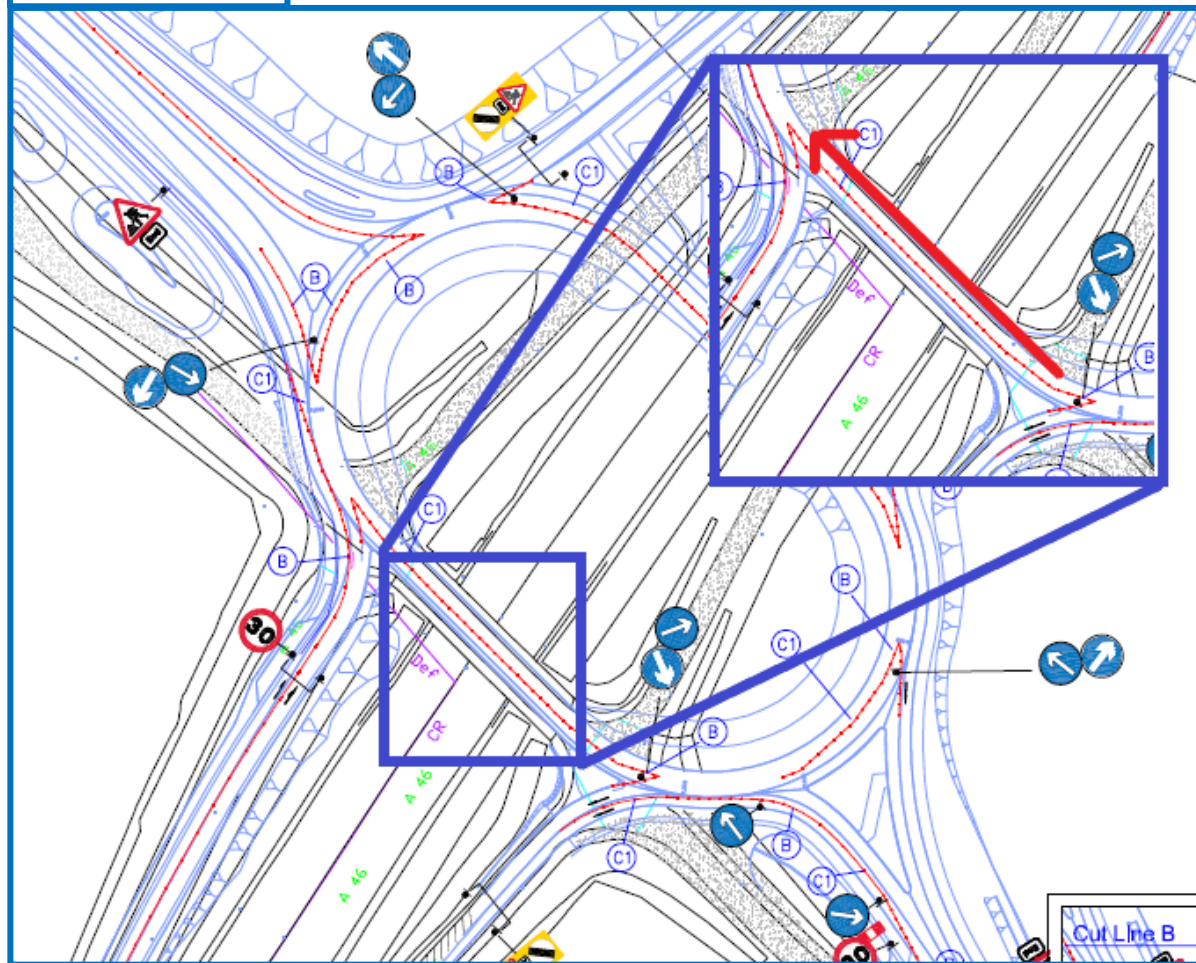
- Surfacing removal
- Concrete repairs
- Upgraded service trough
- Upgraded footpath
- Upgraded parapet
- Waterproofing and resurfacing



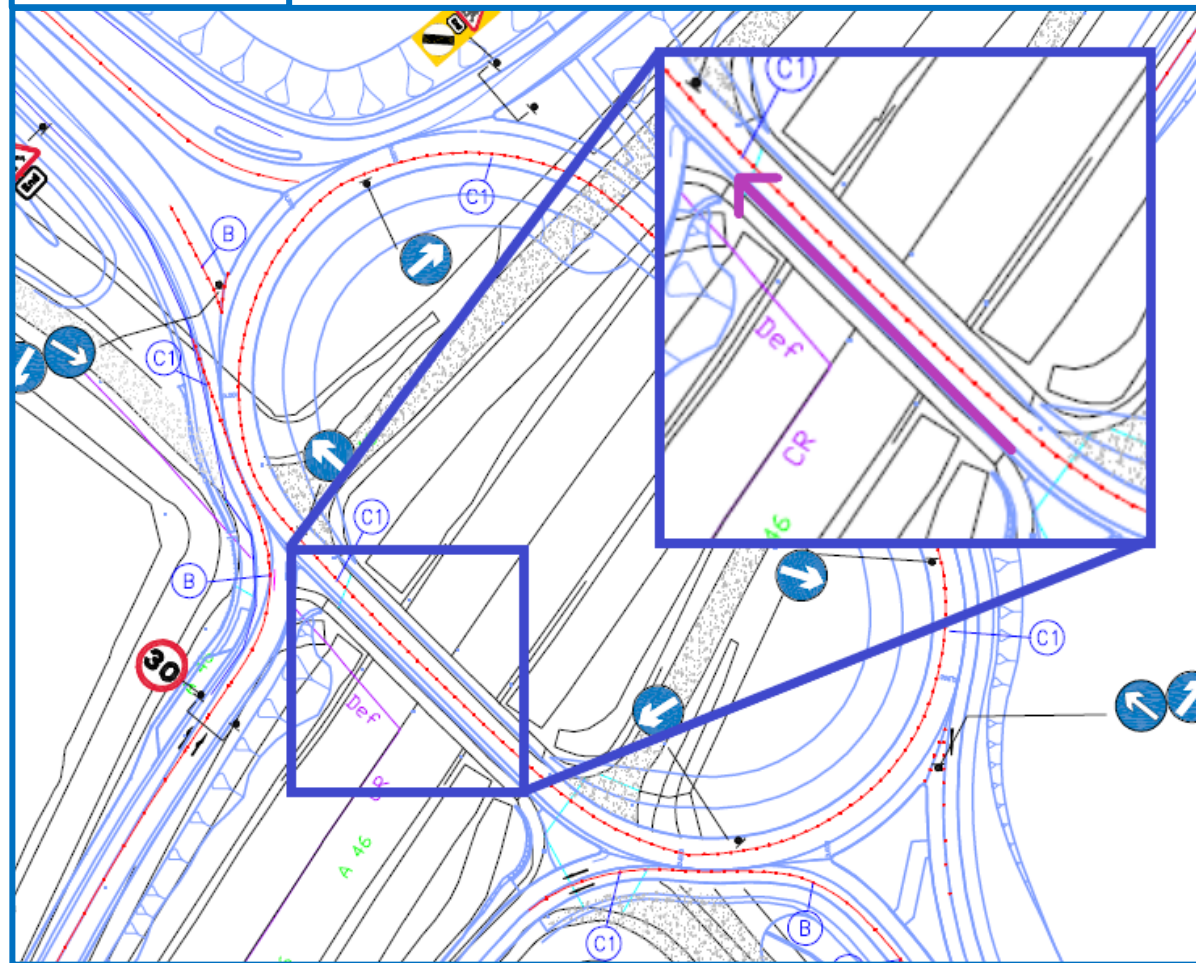
# EXISTING BRIDGE WORKS

## ORIGINAL TRAFFIC MANAGEMENT PLAN

North Verge



South Verge



# EXISTING BRIDGE WORKS

## ORIGINAL PROGRAMME OF WORKS

### A46 Stoneleigh Junction Improvement Scheme

#### Existing Bridge Works - Original

Description	Duration	Week																																			
		1	2	3	4	5	6	7	8	9	10	11	12	13	14	15	16	17	18	19	20	21	22	23	24	25	26	27	28	29	30	31	32	33	34	35	
NEW A46 BRIDGE	19W																																				
Complete Bridge Deck	4W																																				
Bridge Deck Move	1W																																				
Concrete Works	5W																																				
Reinforced Earth	3W																																				
Finishings	6W																																				
EXISTING BRIDGE WORKS	16W																																				
Works to North Verge	8W																																				
Works to South Verge	8W																																				
TOTAL DURATION	35W																																				



# EXISTING BRIDGE WORKS

## PROPOSED WORKS TO EXISTING BRIDGE



### New Work Activities

- Works done in **single phase**
- Reduction in total duration



### Works Involve (Unchanged)

- Surfacing removal
- Concrete repairs
- Upgraded service trough
- Upgraded footpath
- Upgraded parapet
- Waterproofing and resurfacing





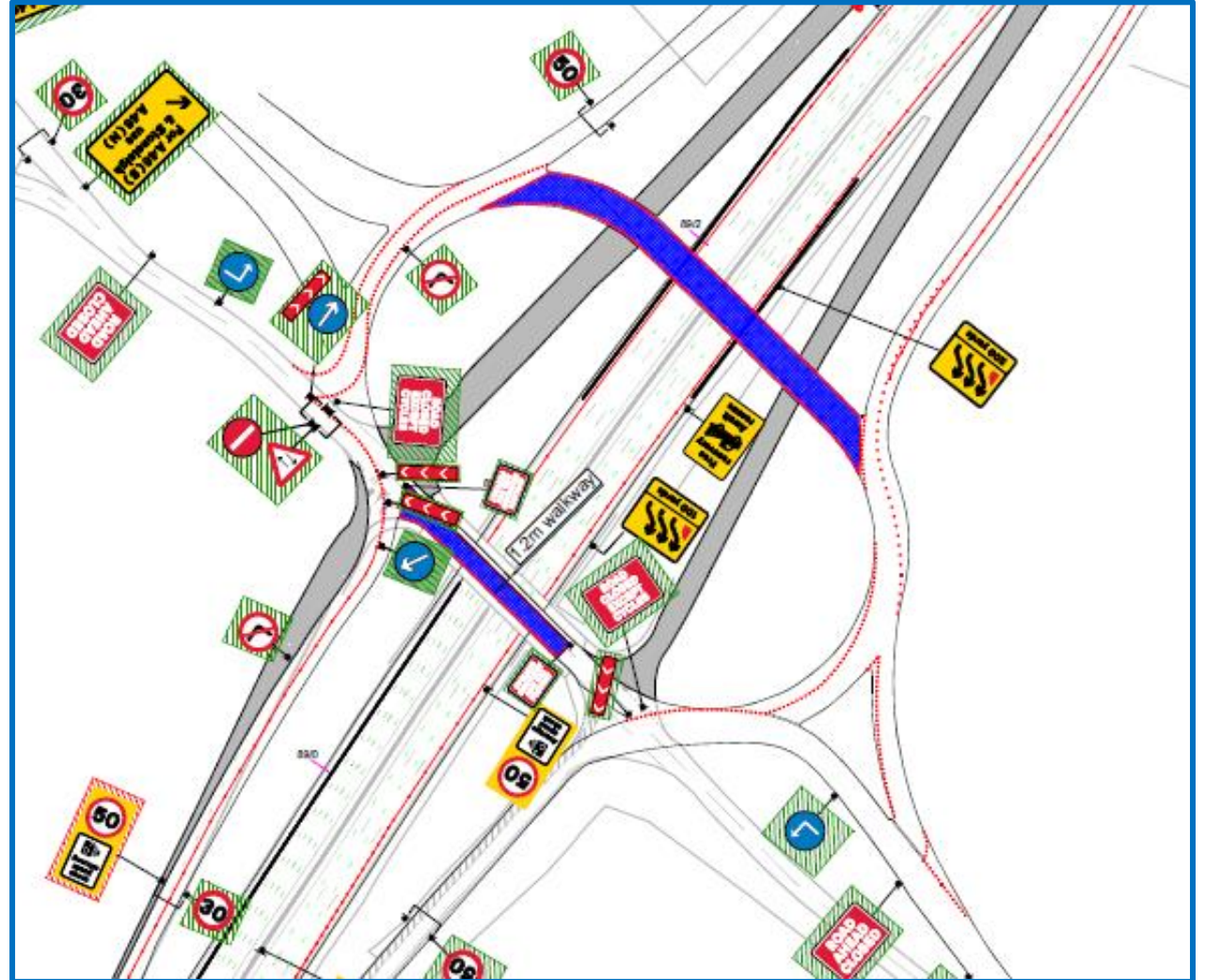
# EXISTING BRIDGE WORKS

## PROPOSED TRAFFIC MANAGEMENT PLAN



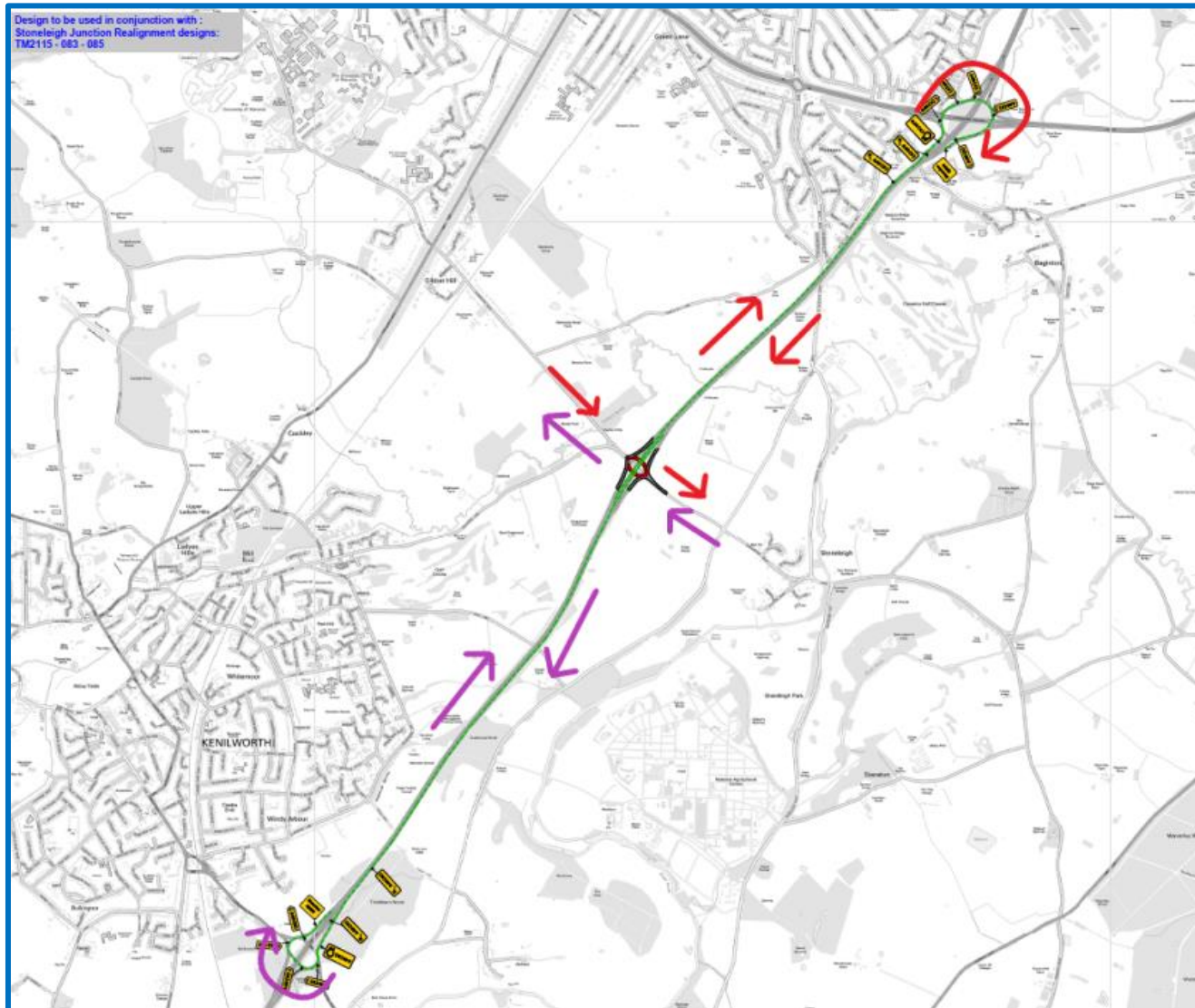
### Effect on Traffic

- Both Bridges Closed
- A46 as diversion route
- No East or West bound traffic



# EXISTING BRIDGE WORKS

## PROPOSED TRAFFIC MANAGEMENT PLAN - DIVERSION



### EAST BOUND TRAFFIC

1. North bound on slip
2. Stivichall interchange
3. South bound on A46
4. South bound off slip



### WEST BOUND TRAFFIC

1. South bound on slip
2. Thickthorn roundabout
3. North bound on A46
4. North bound off slip



# EXISTING BRIDGE WORKS

## PROPOSED PROGRAMME OF WORKS

### A46 Stoneleigh Junction Improvement Scheme

#### Existing Bridge Works - Proposed

Description	Duration	Week																																		
		1	2	3	4	5	6	7	8	9	10	11	12	13	14	15	16	17	18	19	20	21	22	23	24	25	26	27	28	29	30	31	32	33	34	35
<b>NEW A46 BRIDGE</b>	<b>19W</b>																																			
Complete Bridge Deck	4W																																			
Bridge Deck Move	1W																																			
Concrete Works	5W																																			
Reinforced Earth	3W																																			
Finishings	6W																																			
<b>EXISTING BRIDGE WORKS</b>	<b>5W</b>																																			
Close Bridge	0W																																			
Works to Bridge Deck	5W																																			
<b>TOTAL DURATION</b>	<b>19W</b>																																			

# EXISTING BRIDGE WORKS

## PROPOSED TRAFFIC MANAGEMENT PLAN – VECTOS TRAFFIC DELAY ANALYSIS



### ANTICIPATED IMPACT

- Vectos undertook analysis of closure
- Overall 5/7% delay on average
- 5 minute diversion route
- Queuing at Thickthorn Roundabout
- Better traffic at Stoneleigh and Stivichall

*Flow Diagram – AM Peak*



# SUMMARY

## A46 STONELEIGH JUNCTION IMPROVEMENT SCHEME

- > 4 month saving on programme
- > Shorter period of disruption
- > Will provide a safer junction sooner





## ANY OTHER BUSINESS

A46 STONELEIGH JUNCTION IMPROVEMENT SCHEME

# QUESTIONS